

# Hedgehog Belt

**Model:**

Hedgehog Belt

**Material:**

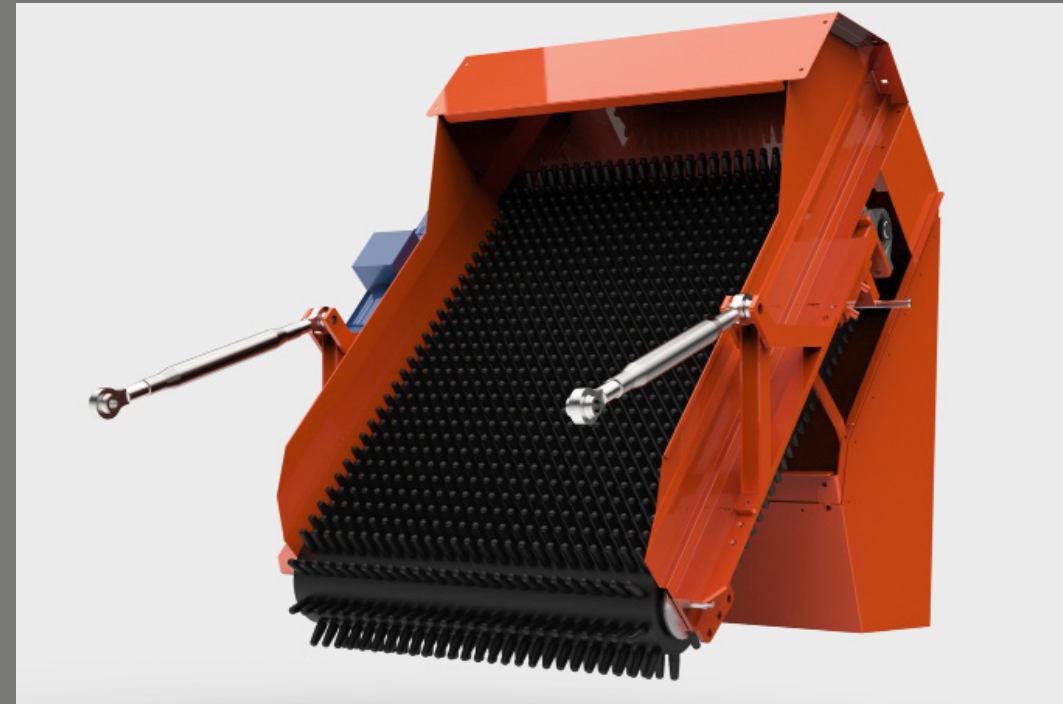
Painted or stainless

Hedgehog belts are used for sorting out tops and other plant parts that are not wanted to appear later in the production. The hedgehog belt will normally be linked to a waste conveyor or similar, to disposal of vegetable waste.

The machine consists of the following main ingredients: Under frame and conveyor frame build in steel, driving- and turning rolls placed in each end of the conveyor frame, an electromotor and an endless vulcanized hedgehog-belt with hogs made of rubber. The conveyor frame is adjustable to the under frame, so that the hedgehog-belt, by turning the handle, can be inclined in the angel wanted.

**Standard**

Model	Dimension	Capacity m <sup>3</sup>
EM1396	800 mm wide	



A Adjustabel angle

B Rubberdrive Wheels



C The hedgehog-belt