

Big-bag Filler

Model:
Big-bag Filler

Material:
Painted

The big-bag filler is used for filling vegetables into big bags.

The machine consists of the following main components:

- 1.Chassis frame in steel.
- 2.Elevator belt frame in steel, driving and turning rollers placed at their respective ends of the cross-brace, driving unit – usually an electric motor, an endless vulcanised conveyor belt in rubber fitted with cleats.
- 3.Zigzag drop damper with steel frame and damping cloth in PVC and electric motor to raise and lower the drop damper.

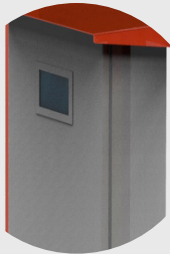
Standard

Model	Dimension	Capacity T/h
EM1891	Single big bag/box filler	
EM1892	Double big bag/box filler	



A Eletric control

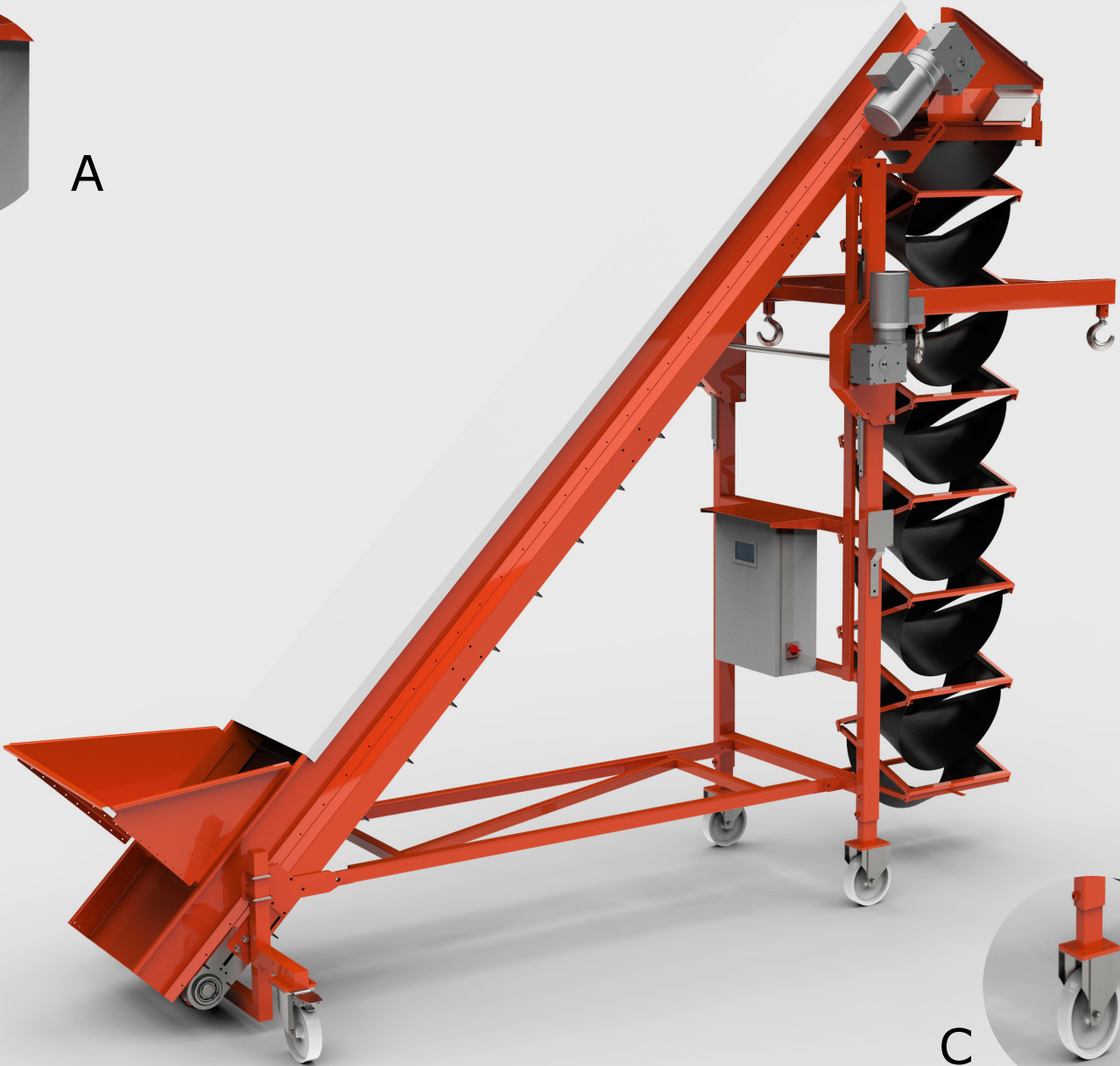
B Ultra sound sensor for layer



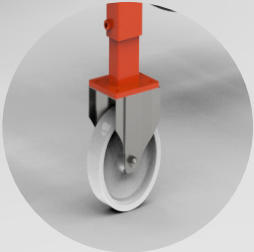
A



B



C



C Mobile Display